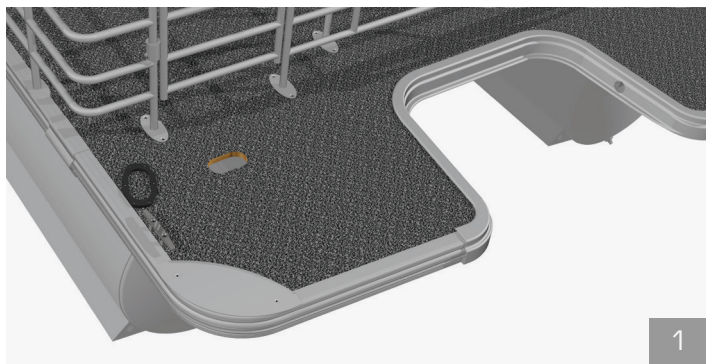


PONTOON SHADE INSTALLATION



1

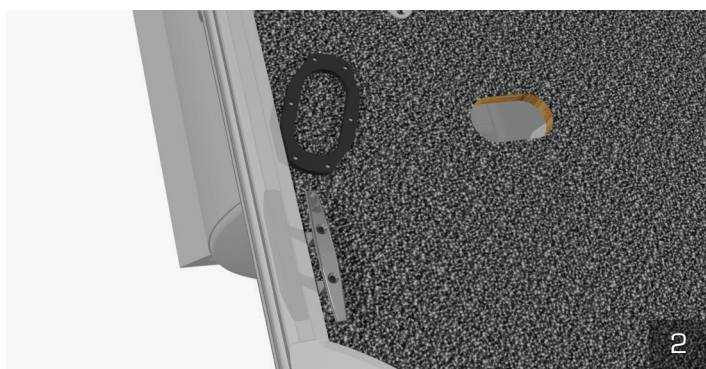
DETERMINE SUITABILITY:

The GEMPLUX pontoon shade system works well for extending the reach of bimini tops or arch-mounted shade. You will need to find space in the aft deck for two of our pontoon shade system deck receptacles and their accompanying backing plates.

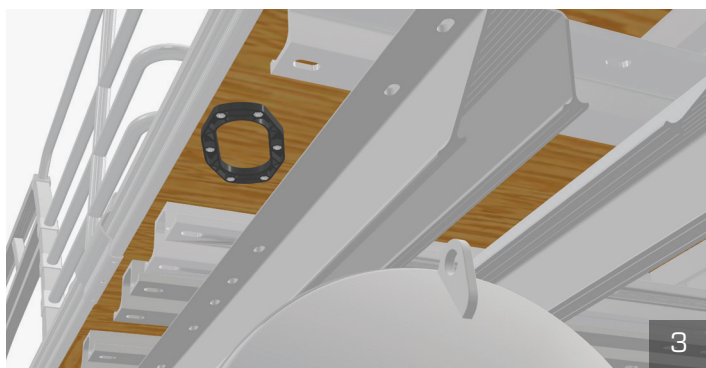
DECK RECEPTACLE POSITIONING:

Place the receptacles as far aft and outboard as possible. Ideally, find a place that has easy underside access as well. Sometimes, underside plating will need to be temporarily removed during the installation to suit the best spot. You'll want to make sure that when the poles are inserted into the receptacles, they won't make contact with anything such as boarding ladders or handrails.

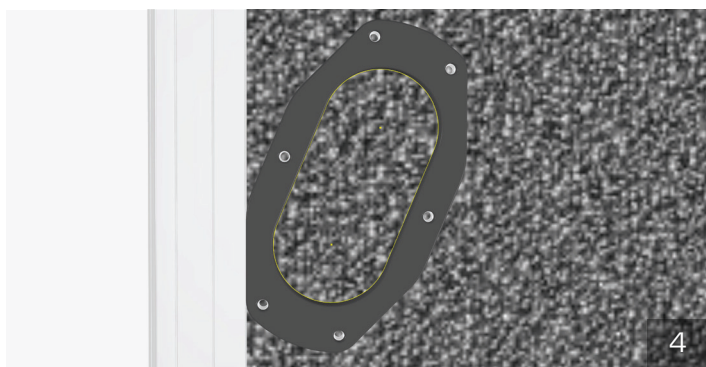
The deck receptacle is installed with the opening pointed outward and aft. Ensure the angled edge of the deck receptacle's face is parallel with the outboard edge of the deck, and they'll be at the correct angle.



2



3



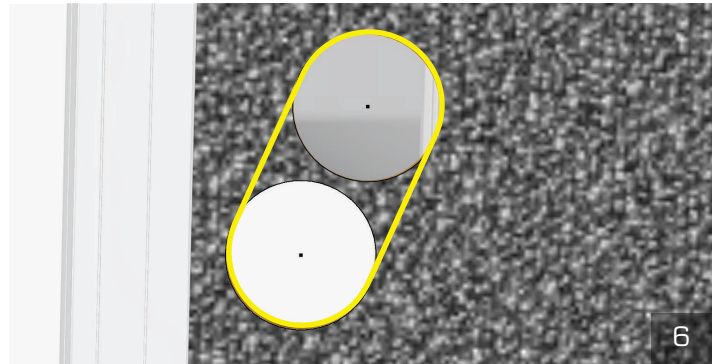
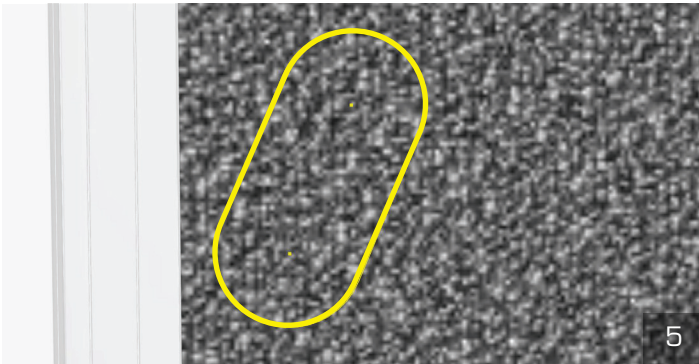
4

ONCE YOU'VE FOUND A SUITABLE POSITION:

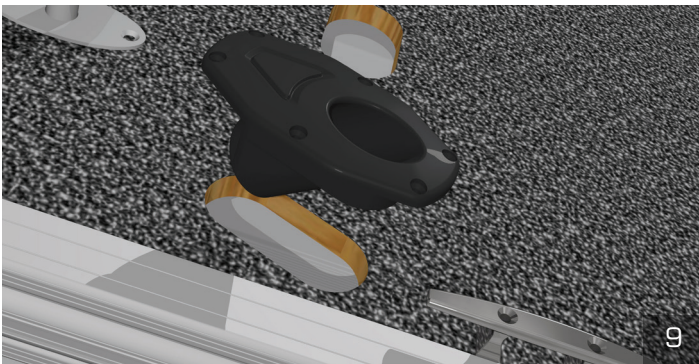
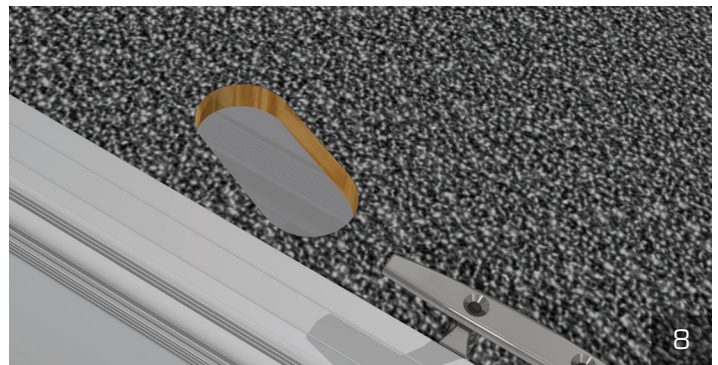
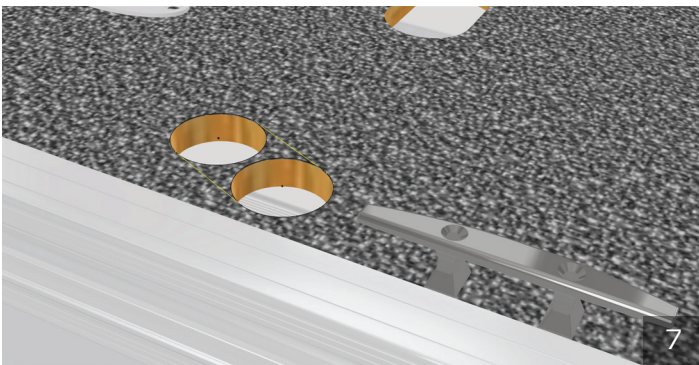
Use the deck receptacle backing plate as a drill template, or use our paper drill template. We recommend practicing the following procedure on some scrap plywood first.

PONTOON SHADE INSTALLATION

MARK THE OVAL SHAPE WITH A FINE-TIP PERMANENT MARKER. Use a 2-1/16" hole saw and drill to cut the holes at each end of the oval. Once the hole saw pilot punches through the deck, it can be useful to stop the cut and then finish from the underside to reduce splintering on the bottom side.



COMPLETE THE OVAL SHAPE CUTOUT. Use a tool such as an oscillating saw.

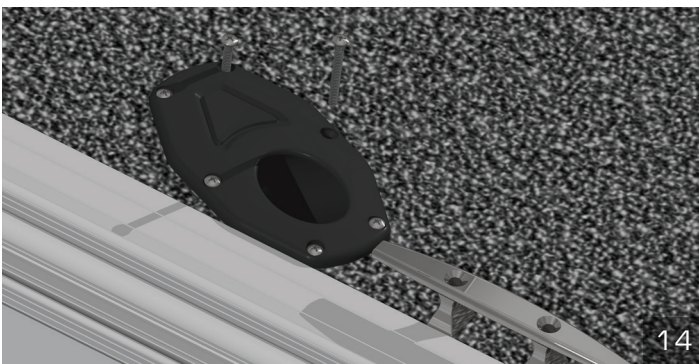
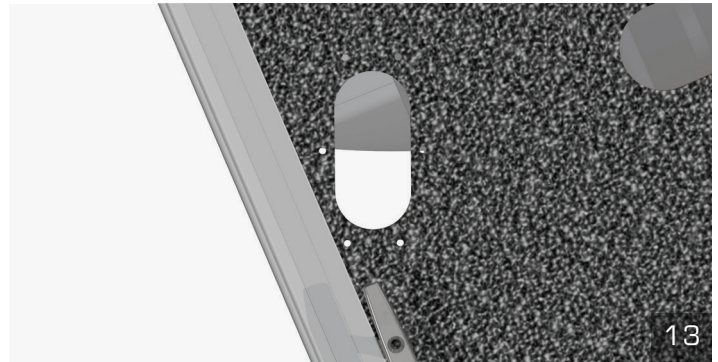
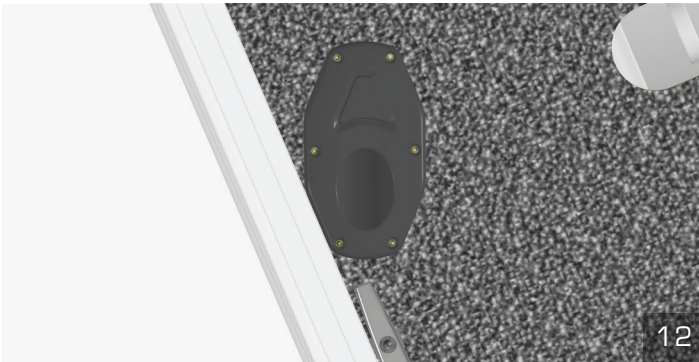
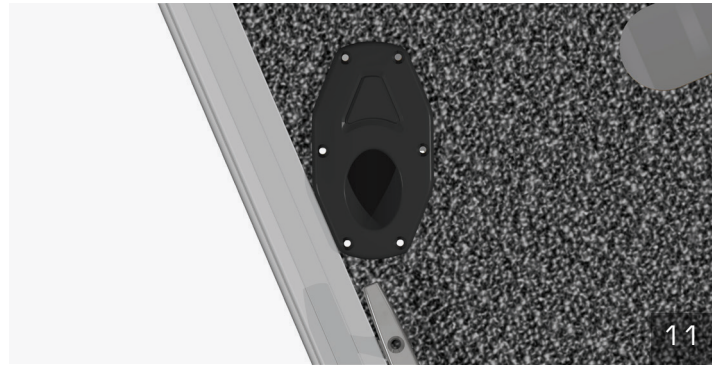
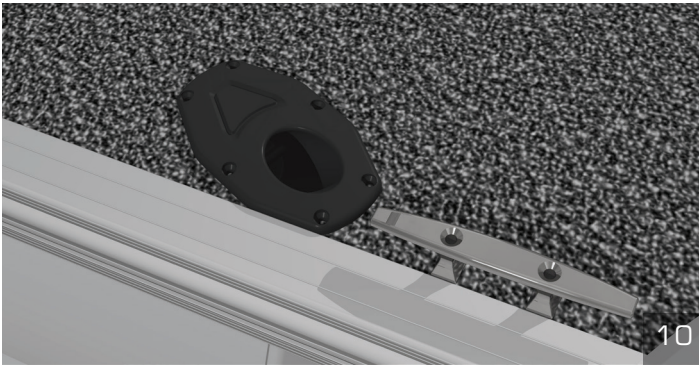


TEST THAT THE DECK RECEPTACLE DROPS NEATLY INTO THE OVAL SHAPE YOU'VE JUST CUT. If it is too tight to gently tap into place, then use a wood rasp or sandpaper to touch up the inside edge of the cut you've made until the deck receptacle fits. A fit that requires lightly tapping the deck receptacle into place is perfect.

PONTOON SHADE INSTALLATION

WITH THE DECK RECEPTACLE INSTALLED IN ITS HOLE:

Mark the positions of the six bolt holes. Remove the deck receptacle and drill clearance holes with a 7/32" or 1/4" drill bit.



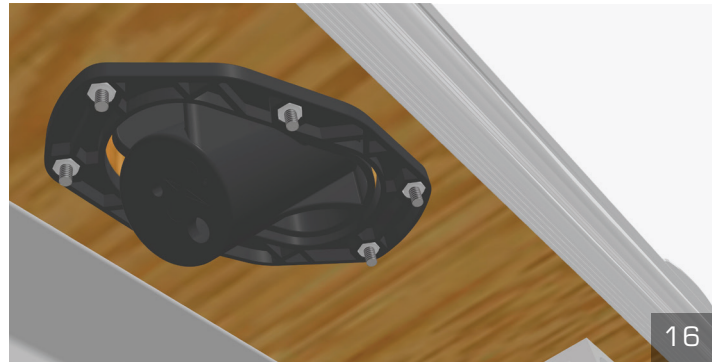
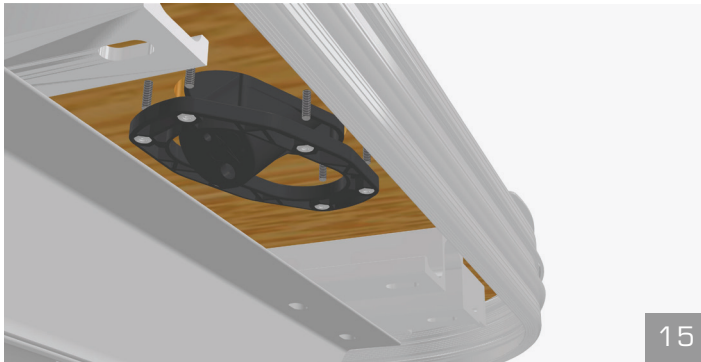
REINSTALL THE DECK RECEPTACLE IN ITS HOLE:

Now pass the six #10-24 machine screws through the receptacle and deck. The required length of the screws will vary according to the thickness of your boat's deck.

PONTOON SHADE INSTALLATION

INSTALL THE SIX MOUNTING SCREWS INTO THE DECK RECEPTACLE BACKING PLATE:

Using a handheld screwdriver, tighten each screw a small amount at a time to draw the backing plate up into place evenly. Snug each screw by hand only. Do not use an impact wrench or drill to tighten the screws.



REPEAT FOR THE OTHER SIDE.

 WATCH OUR INSTALLATION VIDEO HERE:

